

**SPRINKLER REPLACEMENT IN GYM
SWAMPSCOTT HIGH SCHOOL
SWAMPSCOTT, MASSACHUSETTS**

ADDENDUM NO. 1

Addendum Number 1
July 20, 2017
Page 1

NOTICE TO BIDDERS:

This addendum is issued prior to receipt of bids and does hereby become part of the contract Documents, and in case of conflict, it shall supersede original plans and specifications. All bidders shall indicate acknowledgement of this addendum on the bid form. Failure to do so may result in disqualification in accordance with MGL Chapter 149.

ITEM 1: DRAWINGS:

1.1 Drawing FPD2.00:

Fire Protection Demolition Plan updated to reflect as-built conditions.

1.2 Drawing FP2.00:

Fire Protection New Work Plan updated to follow the one to one replacement of the as-built conditions.

This CADD Document is an instrument of professional service, and shall not be used, in whole or in part, for any project other than for which it was created without the expressed, written consent of the RDK Engineers. Any unauthorized use, reuse, modification or alteration, including automated conversion of this document shall be at the user's sole risk without liability or legal exposure to the RDK Engineers.

REVISIONS

DATE	CHK	DESCRIPTION
6/30/17	JTF	CONSTRUCTION DOCUMENTS
7/20/17	CSL	ADDENDUM #1

SEAL

PROJECT

NUMBER
20170333

DATE
7/12/2017

SWAMPSCOTT
HIGH SCHOOL
SPRINKLER BRANCHLINE
REPLACEMENT

DRAWING

DRAWN BY
CSL

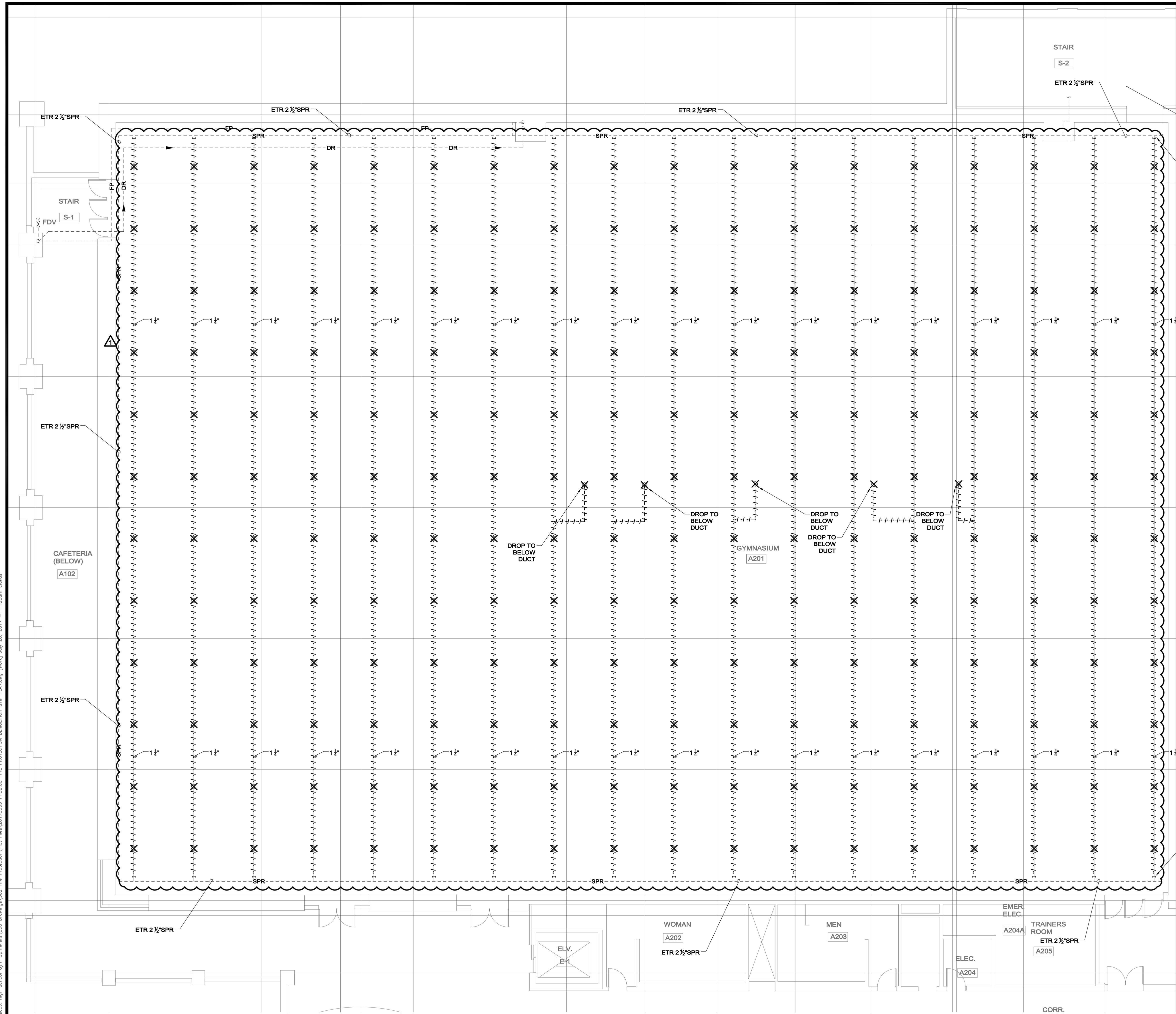
CHECKED BY
JF

SCALE
1/8" = 1'-0"

FIRE PROTECTION
DEMOLITION
GYMNASIUM PLAN

BID DOCUMENTS
07-12-17

FPD2.00



EXISTING FP SERVICE IN STAIRWELL TO REMAIN INTACT & OPERATIONAL DURING CONSTRUCTION.

VALVE AND CAP EXISTING BRANCH LINES BACK TO EXISTING MAIN FOR RECONNECTION DURING NEW WORK PHASE. VALVES ARE TEMPORARY; REMOVE VALVES DURING NEW WORK PHASE. (TYP. FOR 13)

NOTE:
APPROXIMATE ROOF ELEVATION IS 30'

VALVE AND CAP EXISTING BRANCH LINES BACK TO EXISTING MAIN FOR RECONNECTION DURING NEW WORK PHASE. VALVES ARE TEMPORARY; REMOVE VALVES DURING NEW WORK PHASE. (TYP. FOR 13)

NOTE:
PROVIDE SPRINKLER SYSTEM SHUTDOWN, DRAINING, AND RE-FILL TO FACILITATE THE SPRINKLER SYSTEM WORK AS PART OF THESE CONSTRUCTION DOCUMENTS. PROVIDE MULTIPLE SYSTEM SHUTDOWNS, DRAININGS, AND RE-FILLS AS REQUIRED TO FACILITATE THE WORK. COORDINATE ALL SHUTDOWNS WITH THE OWNER & FIRE DEPARTMENT AND DOCUMENT IN THE IMPAIRMENT PLAN & PERMITS.



1/8" = 1'-0"

C:\2017\20170333 - Swampscott High School Gym Sprinkler A201 Drawings\2017 Fire Protection\Plan Files\20170333 FPD2.00 FIRE PROTECTION DEMOLITION CHG PLAN.dwg [new] July 25, 2017 - 11:53am class

This CADD Document is an instrument of professional service, and shall not be used, in whole or in part, for any project other than for which it was created without the expressed, written consent of the RDK Engineers. Any unauthorized use, reuse, modification or alteration, including automated conversion of this document shall be at the user's sole risk without liability or legal exposure to the RDK Engineers.

REVISIONS

DATE	CHK	DESCRIPTION
6/30/17	JTF	CONSTRUCTION DOCUMENTS
7/20/17	CSL	ADDENDUM #1

SEAL

PROJECT

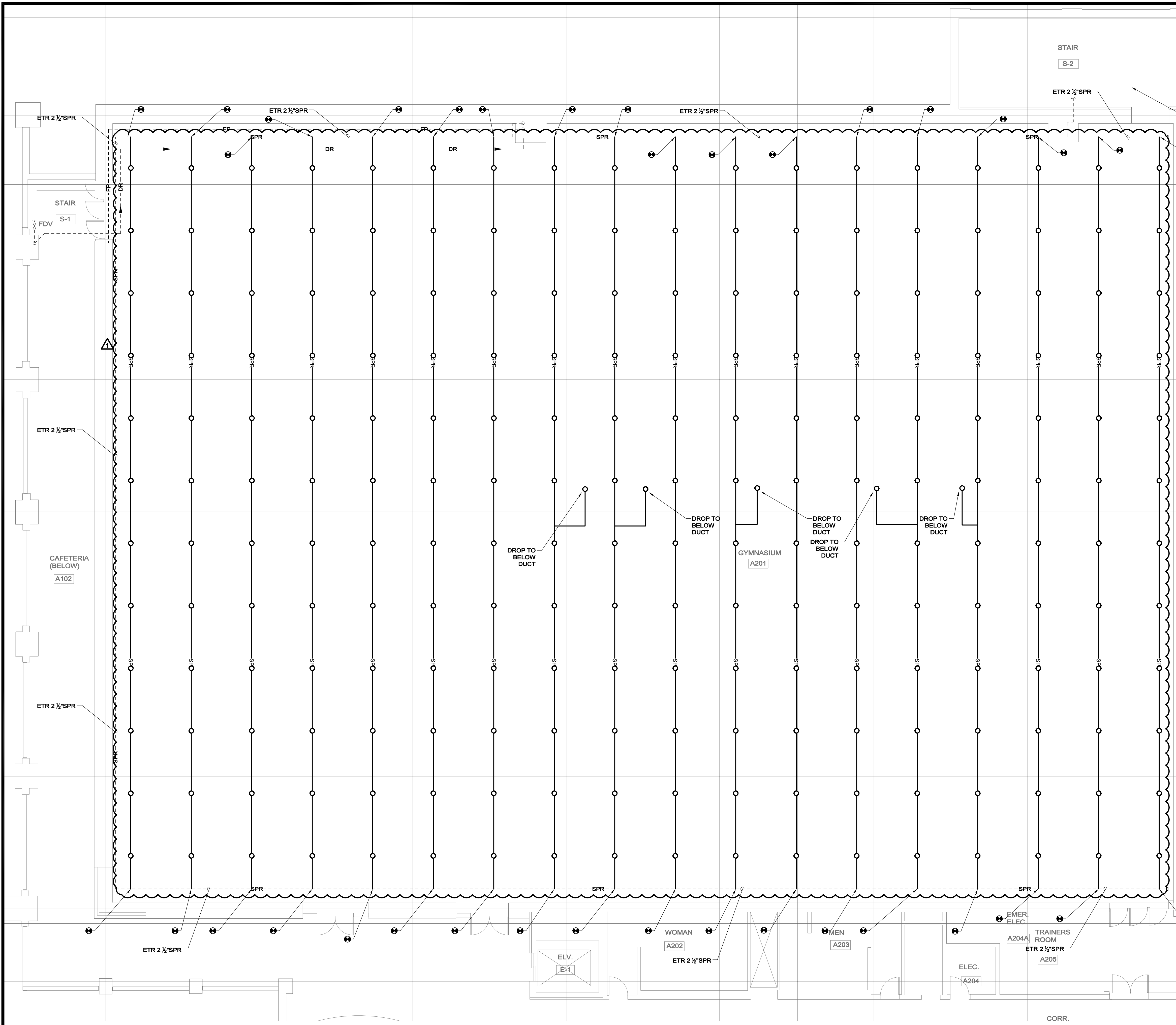
NUMBER
20170333
DATE
7/12/2017
SWAMPSCOTT
HIGH SCHOOL
SPRINKLER BRANCHLINE
REPLACEMENT

DRAWING

DRAWN BY
CSL
CHECKED BY
JF
SCALE
1/8" = 1'-0"
FIRE PROTECTION
NEW WORK
GYMANASIUM PLAN

BID DOCUMENTS
07-12-17

FP2.00

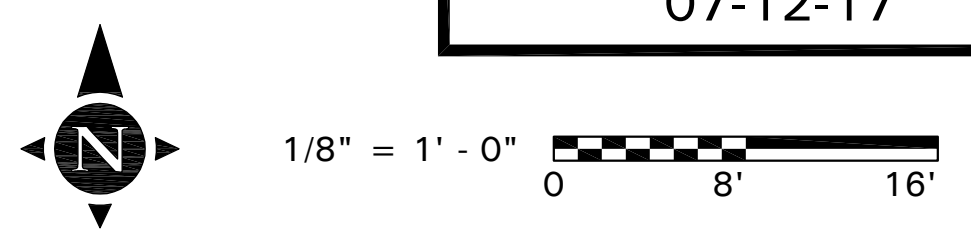


EXISTING FP SERVICE IN STAIRWELL TO REMAIN INTACT & OPERATIONAL DURING CONSTRUCTION.
SPR MAIN WITH NEW BRANCHLINE RISER AND BRANCHLINE REMOVE TEMPORARY VALVE. (TYP)

NOTE:
APPROXIMATE LINEAR FT OF PIPE: 2,416'

NOTE:
APPROXIMATE ROOF ELEVATION IS 30'

NOTE:
PROVIDE SPRINKLER SYSTEM SHUTDOWN, DRAINING, AND RE-FILL TO FACILITATE THE SPRINKLER SYSTEM WORK AS PART OF THESE CONSTRUCTION DOCUMENTS. PROVIDE MULTIPLE SYSTEM SHUTDOWNS, DRAININGS, AND RE-FILLS AS REQUIRED TO FACILITATE THE WORK. COORDINATE ALL SHUTDOWNS WITH THE OWNER & FIRE DEPARTMENT AND DOCUMENT IN THE IMPAIRMENT PLAN & PERMITS.



D:\2017\20170333 - Swampscott High School Gym Sprinkler\060 Drawings\020 Fire Protection\Plan - Gym Sprinkler\Plan - Gym Sprinkler.dwg [Rev.], July 20, 2017 - 11:23am, csll